

THE STORY

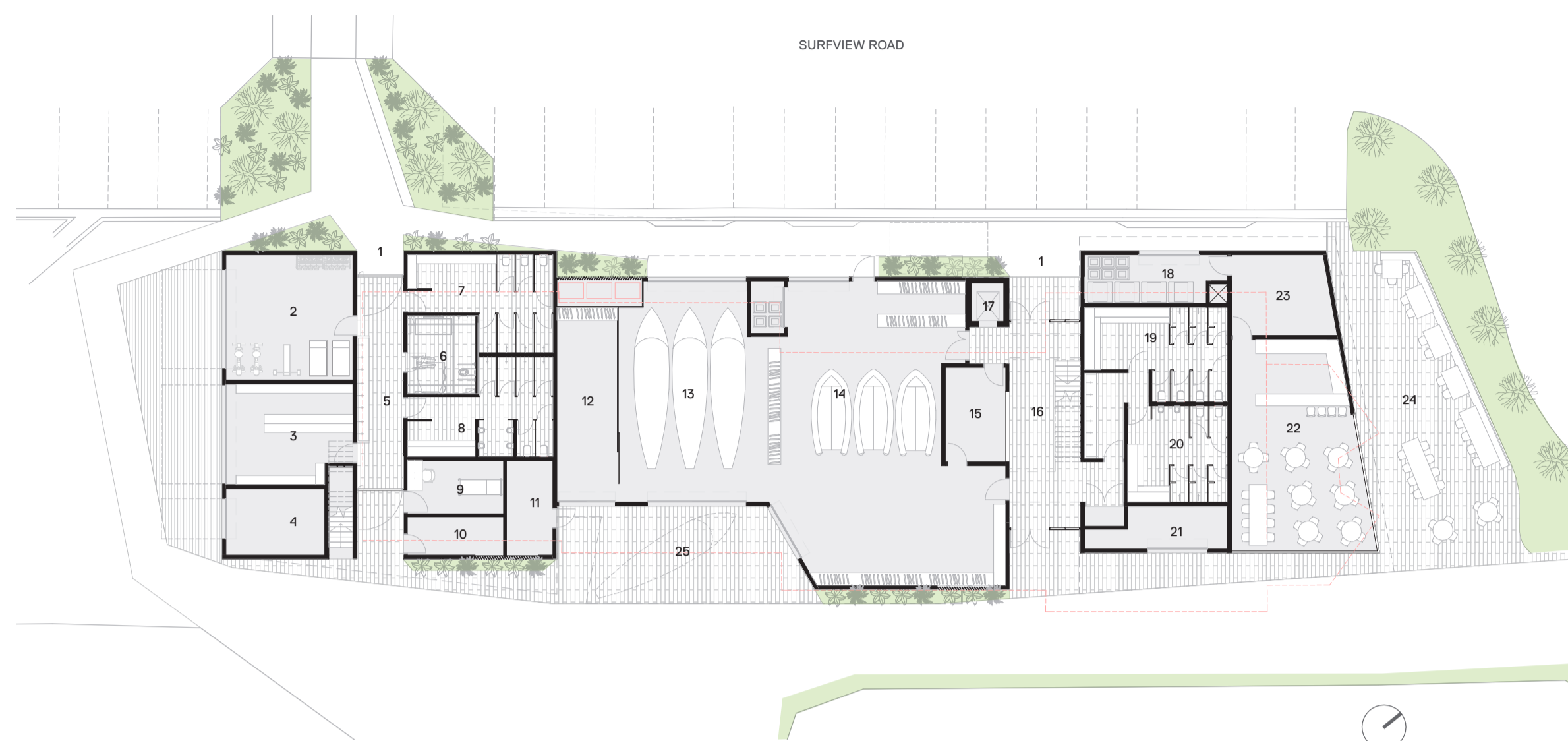
The new Mona Vale Surf Life Saving Club presents a unique opportunity to provide a world class building that meets the needs of the occupants, and engages the Mona Vale community with new social spaces.

Drawing the community, the park and the beach together, the new surf club will provide enriching experiences to the local residents, as well as offer new social spaces for the wider community. In addition to this the new highly functional surf club will facilitate a safer beach experience and allow the surf club to reach its full potential.

Working group engagement with members of the community and surf club representatives enabled us to analyse and understand the inner workings of the club to optimise efficiencies in the design.

The building is an expression of its functions, with primary SLSC operations on the ground plane, and three distinct private and public function areas defined on level one. Elevating these uses maximises views to the beach, headlands and park, allowing a connection to the natural and physical beauty that is Mona Vale.

GROUND LEVEL



- | | | | | |
|-----------------------------|---------------------------|-----------------------------|--------------------|------------------------------------|
| 1 - Forecourt/Entry | 8 - Public Male Amenities | 15 - Office/Admin | 22 - Cafe | Existing Building
Building Over |
| 2 - Gym | 9 - First Aid | 16 - Lobby | 23 - Cafe Kitchen | |
| 3 - Nippers shop/store | 10 - Patrol | 17 - Lift | 24 - Cafe Deck | |
| 4 - Nippers Canteen | 11 - Lifeguard | 18 - Bin Storage | 25 - Wash Down Bay | |
| 5 - Public Amenities Wash | 12 - Lifeguard Storage | 19 - SLSC Female Amenities | | |
| 6 - Public Accessible WC | 13 - Life Saving Storage | 20 - SLSC Male Amenities | | |
| 7 - Public Female Amenities | 14 - Surf Sports Storage | 21 - MV Boardriders Storage | | |

LEVEL ONE

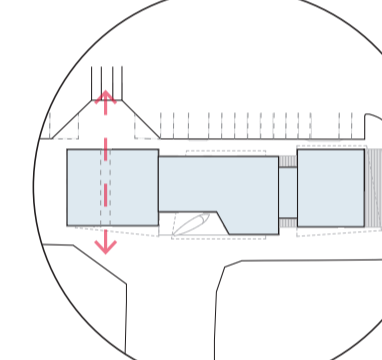
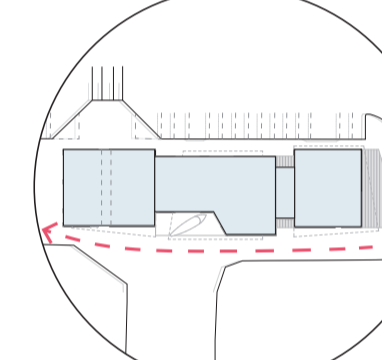
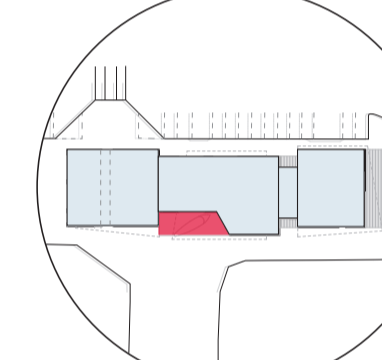
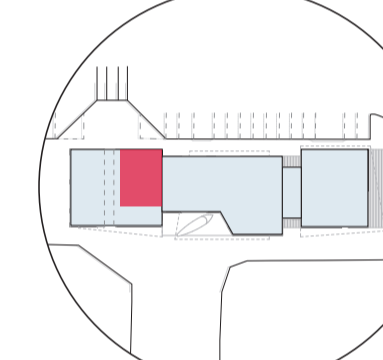
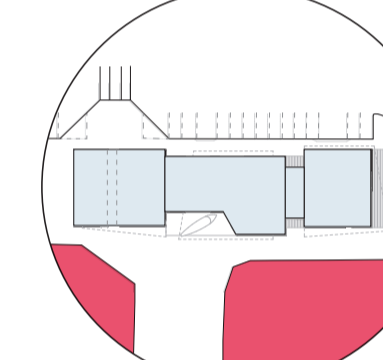
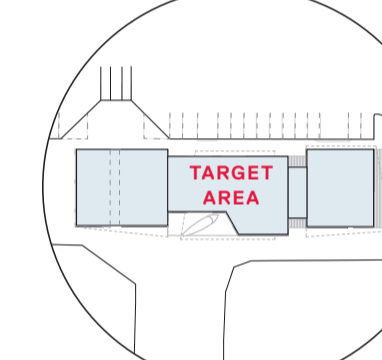


- | | | | |
|--------------------------|------------------------|-------------------------|------------------------------------|
| 1 - Members Balcony | 8 - Male Amenities | 15 - Accessible WC | Existing Building
Building Over |
| 2 - Members Bar/Kitchen | 9 - Female Amenities | 16 - Restaurant Kitchen | |
| 3 - Members Meeting Room | 10 - Function/Training | 17 - Restaurant Bar | |
| 4 - Observation Room | 11 - Function Balcony | 18 - Restaurant | |
| 5 - Members Lounge | 12 - Lift | 19 - Restaurant Balcony | |
| 6 - Caretaker | 13 - Circulation | | |
| 7 - Storage | 14 - Storage | | |

GUIDING PRINCIPLES

 FUNCTIONAL it just works	 ENDURING design + materials	 LOCAL of the people, of the place	 RICH HISTORY respect the past + celebrate the present + shape the future	 SOCIAL CONNECTOR a community meeting place	 SERVING THE COMMUNITY for recreation + sporting excellence
---	---	---	--	--	--

KEY CONSIDERATIONS

 through site link	 improved pedestrian movement	 wash down functionality	 public amenities within building	 no impact on the dunes	 achieve briefed areas
---	--	---	--	--	---

