

B-line Update

The NSW Government is taking action to deliver transport improvements for the Northern Beaches, including an integrated program of service and infrastructure improvements to deliver a new B-Line bus service.

The B-Line service is scheduled to start operating in late 2017. The B-Line will provide more frequent and reliable services for customers travelling between the Northern Beaches and the Sydney CBD.

About the program

To deliver a new B-Line service, a program of works is proposed along the corridor from Mona Vale to the CBD including roadworks, new bus stops, new commuter car parking facilities, localised streetscape upgrades and improvements to pedestrian and cycling links.

Mona Vale Commuter Car Park and B-Line stops proposal on public display

Transport for NSW is proposing to provide commuter car parking and new B-Line and local bus stops on Barrenjoey Road at Mona Vale.

In order to obtain planning approval for this proposal, a Review of Environmental Factors (REF) has been prepared and will be placed on public display between 14 November and 28 November 2016.

The REF identifies the potential environmental benefits and impacts of the proposal and outlines the mitigation measures to reduce the identified impacts. It also summarises and addresses feedback received from the community following engagement activities undertaken earlier this year.

The REF is available to view from **Monday 14 November 2016 to Monday 28 November 2016** at:

www.b-line.transport.nsw.gov.au

Northern Beaches Council

Mona Vale Customer Service Centre,
1 Park Street, Mona Vale

Mona Vale Library

1 Park Street, Mona Vale

Transport for NSW

Zenith Centre, Level 5, Tower A
821 Pacific Highway, Chatswood



What work is proposed at Monna Vale?

- conversion of 74 existing parking spaces in the Beeby Reserve car park adjacent to Barrenjoey Road to unrestricted commuter car parking spaces, including replacing / removing signage
- new northbound and southbound bus stops on Barrenjoey Road, north of Pittwater Road, including weather protection, seating and real-time information
- a northbound bus indent at Village Park on Barrenjoey Road
- road works on Pittwater Road, Golf Avenue, Park Street and Barrenjoey Road including kerb and pedestrian island adjustments, a new signalised pedestrian crossing across the slip lane from Pittwater Rd heading north onto Barrenjoey Rd, extension of turning lanes, pedestrian fencing, pavement works and line marking
- a new signalised pedestrian crossing across Golf Avenue at the intersection with Barrenjoey Road
- relocation of the northbound bus stop from the corner of Pittwater Road / Waratah Street to Pittwater Road south of Bungan Lane
- removal of two local bus stops (northbound and southbound) located on Barrenjoey Road, north of Park Street / Golf Avenue and co-location with the new B-Line stops
- removal of approximately 33 trees / shrubs and new landscaping to compensate loss
- new bicycle parking and improvements to bicycle and pedestrian links
- removal of eight on street parking spaces

What issues have been identified in the REF?

The REF contains information from a range of environmental, social and technical assessments. The key impacts identified during construction of the proposed works include:

- temporary noise and vibration impacts
- temporary traffic and pedestrian impacts
- visual impacts

These impacts are anticipated to be primarily temporary in nature and can be managed through appropriate mitigation measures.

The following key operational impacts have the potential to occur as a result of the proposal:

- visual impacts
- increase in commuter car parking
- removal of eight on street parking spaces.

Further information regarding these impacts and proposed mitigation measures is available in the REF.

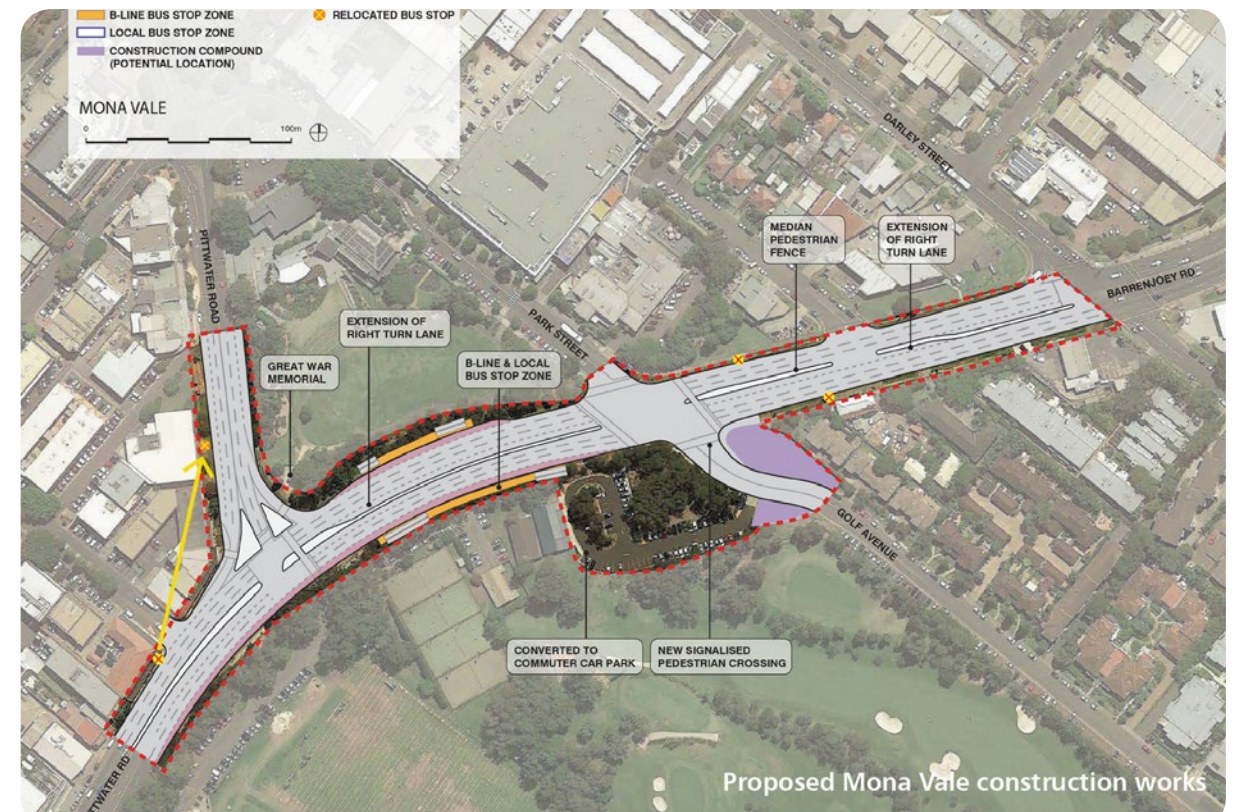
Commuter car parking options considered

Earlier this year we sought comment from the community on the option to demolish the Scout Hall, Guide Hall and Tennis Club House and relocate these community facilities adjacent to a new commuter car park comprising of 150 commuter parking spaces. Feedback from this consultation has been taken into consideration and this option is no longer preferred.

Transport for NSW is currently considering parking demand and how this might be influenced by changes to the Northern Beaches bus network and service plan.

A separate community consultation period for the proposed bus network and service plan is expected in coming months.

A new option, which is the subject of this REF, has been developed which includes the conversion of 74 existing parking spaces in the Beeby Reserve car park to unrestricted commuter parking spaces. This is preferred as it retains flexibility to respond to investigations into future parking demand while reducing the impact on community facilities.



Proposed Monna Vale construction works

Find out more

The project team will be available to discuss the proposed Mona Vale B-Line works at a community session on **Tuesday 15 November 2016** from **4:30pm to 6:30pm**. This session will be held at the **Mona Vale Memorial Hall**, 1 Park Street, Mona Vale.

Drop in at any time. No RSVP required.

Next steps?

Feedback received during the public display period for proposed works at Mona Vale will assist Transport for NSW to prepare plans for managing impacts during construction and operation.

Subject to planning approval, construction of the proposed works at Mona Vale is expected to start in 2017 and take up to 8 months to complete. B-Line services are scheduled to start operating in late 2017.

Have your say

You're invited to provide a written submission about the proposed works detailed in the REF during the public display period.

Submissions can be made online at **b-line.transport.nsw.gov.au**, emailed to **projects@transport.nsw.gov.au** or sent to:

Northern Beaches B-Line Program
Transport for NSW
Locked Bag 6501
St Leonards NSW 2065

Submissions should be received by **5pm on Monday 28 November 2016**.



This document contains important information about public transport projects in your area. If you require the services of an interpreter, please contact the Translating and Interpreting Service on 131 450 and ask them to call Transport for NSW on (02) 9200 0200. The interpreter will then assist you with translation.

German

Dieses Dokument enthält wichtige Informationen über die Planung der öffentlichen Verkehrsmittel in ihrer Umgebung. Falls Sie einen Dolmetscher benötigen, wenden Sie sich bitte an die Dienststelle für Übersetzer und Dolmetscher unter der Nummer 131 450 und bitten diese die Transport Projects unter der Nummer (02) 9200 0200 anzurufen. Ein Dolmetscher wird ihnen dann mit dem Übersetzen des Texts helfen.

Italian

Il presente documento contiene importanti informazioni sulle iniziative nel campo del trasporto pubblico nella vostra zona. Se desiderate i servizi di un interprete, contattate il Servizio traduzioni e interpreti al numero 131 450 indicando di voler parlare con Transport Projects al numero (02) 9200 0200. L'interprete vi aiuterà a condurre la conversazione telefonica.

Spanish

El presente documento contiene información importante sobre proyectos de transporte público en su área. Si requiere los servicios de un intérprete, llame al Translating and Interpreting Service al 131 450 y pídale que llamen a Transport Projects, teléfono: (02) 9200 0200. Luego el intérprete le ayudará con la traducción.

Contact us

For further information please visit the website at **b-line.transport.nsw.gov.au**, call 1800 048 751 or email **projects@transport.nsw.gov.au**



Transport
for NSW

NSW
MAKING IT HAPPEN