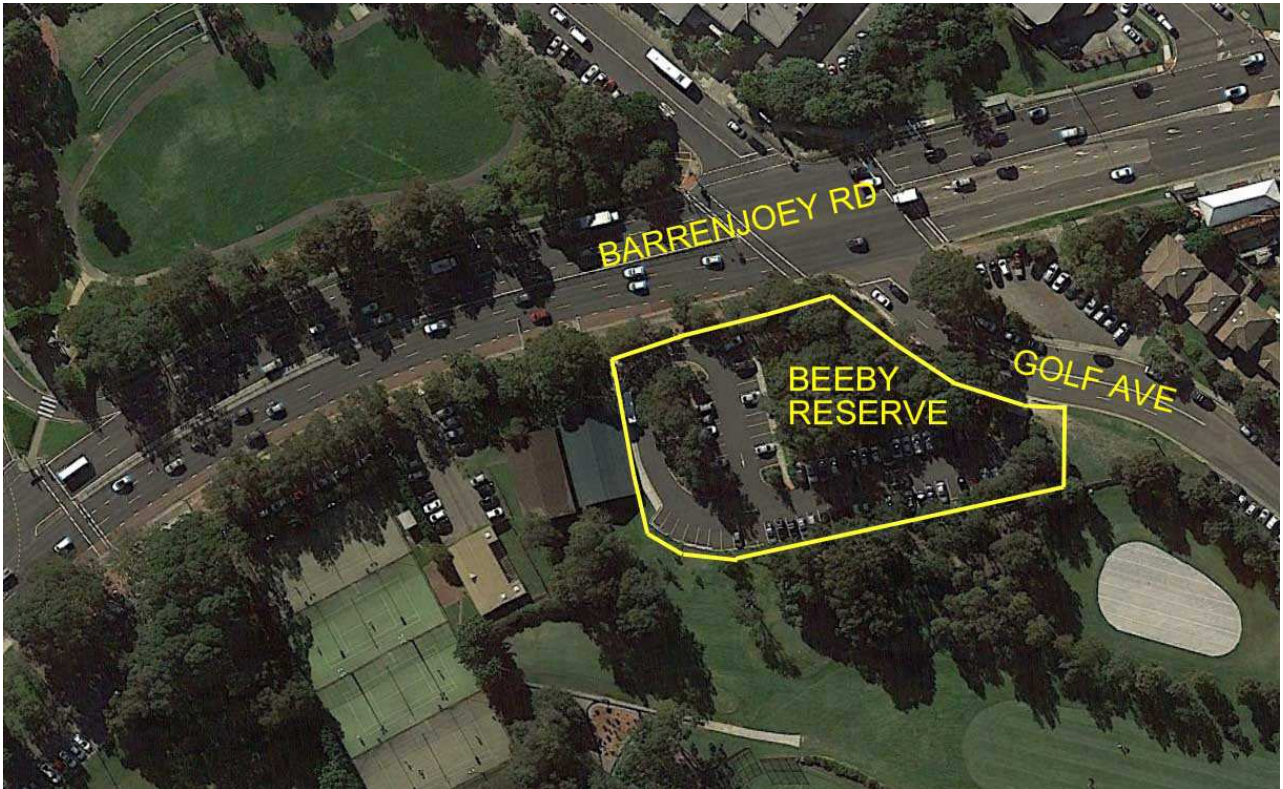


Dear Premier

I ask for your intervention in your Governments Transport for NSW Division regarding the B-Line Proposed Parking Changes in Beeby Reserve Car Park Mona Vale.

Beeby Reserve (Park) Mona Vale is on the corner of Golf Ave and Barrenjoey Rd and it is not owned by Northern Beaches Council. It is in fact Crown Land and Northern Beaches Council (previously Pittwater Council) merely has Care Control and Maintenance of the reserve.



In September 2013 Pittwater Council, against the wishes of many in the community bulldozed 79 trees and basically cleared the site to create a bitumen parking area for 74 cars. The above image shows these concluded works and the reserve.

Concerns raised by the community were that it would be used by park and ride commuters. This use is not consistent with the Crown Lands Act in that any parking in Beeby Park must be associated with the use of the reserve, that being sports and recreation.

This is confirmed in Crown Land advice in email correspondence: -

----- Original Message -----

From: [Anthony Ryan](#)

To: [REDACTED]

Cc: [Stephen Fenn](#) ; [Elizabeth Lobo](#)

Sent: Monday, April 15, 2013 3:48 PM

Subject: Interim response - Beeby Park (R45244) Reserve Trust - Car Park proposal by Pittwater Council (08/8152-03)

Thank you for your email below.

The north east corner of Beeby Park where the car park is proposed is part of Crown Reserve 45244 for the public purpose of public recreation. Reserve 45244 is under the control of the Beeby Park (R45244) Reserve Trust, managed by Pittwater Council.

A review of our records shows the Crown land component of Council's master plan of 2009 was not adopted as a Plan of Management under the *Crown Lands Act 1989*.

Council's report of 07 September 2009, intended proceeding with the car park in Beeby Park on the basis that "the proposed car park at the north end of the park is ancillary to the use of the Kitchener Park precinct for the benefit of the 1,900 members of existing sporting groups and to allow for the future growth including the regional skate facility" and "the draft plan considers pay- and- display parking to prevent its use by commuters, shoppers and local workers".

The appropriateness of a car park in Beeby Park is primarily a matter for the Council as Trust manager, subject to **any car parking facilities being ancillary to the public purpose of public recreation and consistent with the relevant provisions of the *Crown Lands Act 1989***.

The references in the attached to car spaces being provided for Council staff; parking demand from Mona Vale Commercial Centre; and park and ride facilities do not appear to be consistent with Council's September 2009 position outlined above.

As such I understand that Stephen Fenn, Senior Area Manager, will be seeking updated advice from Pittwater Council in the near future.

(Stephen – please see DOC13/041062 for all attachments as forwarded by Mr Smith)

Please quote our file reference 08/8152-03 in future correspondence on this matter.

Regards

Anthony Ryan | Group Leader Natural Resources and Property Services, Crown Lands
NSW Trade & Investment | Level 12, 10 Valentine Ave Parramatta | PO Box 2185 Dangar NSW 2309
T: 02 8836 5304 | E: anthony.ryan@lands.nsw.gov.au W: www.crownland.nsw.gov.au

Subsequent to the concerns raised by the community in 2013 the Elected Council of Pittwater resolution was to install signs throughout Beeby Reserve car park indicating that all spaces were 4 hr timed parking in order to discourage commuters to park there.



Remember Beeby Reserve car park is not owned by Pittwater Council, not owned by Transport for NSW, but is owned by the Crown and the people of NSW – the Pittwater Community.

On 11 July 2014 Save Beeby Park Committee met with David Clarke from Crown Lands on site to discuss the recent removal of a number of the 4 hr time limit parking signs apparently overnight with no Council meeting to discuss this.



Following the meeting David Clarke sent a letter to Pittwater Council, see Attachment 1. It states the Crown gives conditional approval for 12 months for the temporary removal of the 4 hr parking signs for 36 spaces. This effectively would enable Commuters to Park and Ride. Again this use is not consistent with the Crown Lands Act.

The letter states at the conclusion the Crown will consider the matter further and states that Pittwater Council needs to provide data and commentary on utilization rates for the 12 month period and provide further justification that any permanent changes to timed parking for the 36 spots would be conducive to the declared purpose of the reserve and continue to meet the broader principles of Crown Land Management.

Beeby Park corner of Barrenjoey Rd and Golf Ave had 72 spaces timed limited to 4 hour parking. This served the community very well in the shopping precinct and sports with recreation purposes. When the 4 hour timed parking signs were removed for 36 spots half the car park was lost to park and ride bus commuters.

It must be noted that Pittwater Council never complied with the requests in the letter from Crown Lands and the 36 untimed parking spots are now full each weekday of park and ride commuters.

Now TfNSW proposes to take over the whole Beeby Reserve car park for park and ride. This is preposterous. The current 36 spaces 4 hours for timed parking are at most times 95% full serving the short term parking requirements of the shopping and sporting precinct.

Removal of these 4 hour spots to B-Line bus park and ride cannot be allowed. It is a greedy grab for a quick win by TfNSW with no forethought for the current casual parking use of the 36 spots.

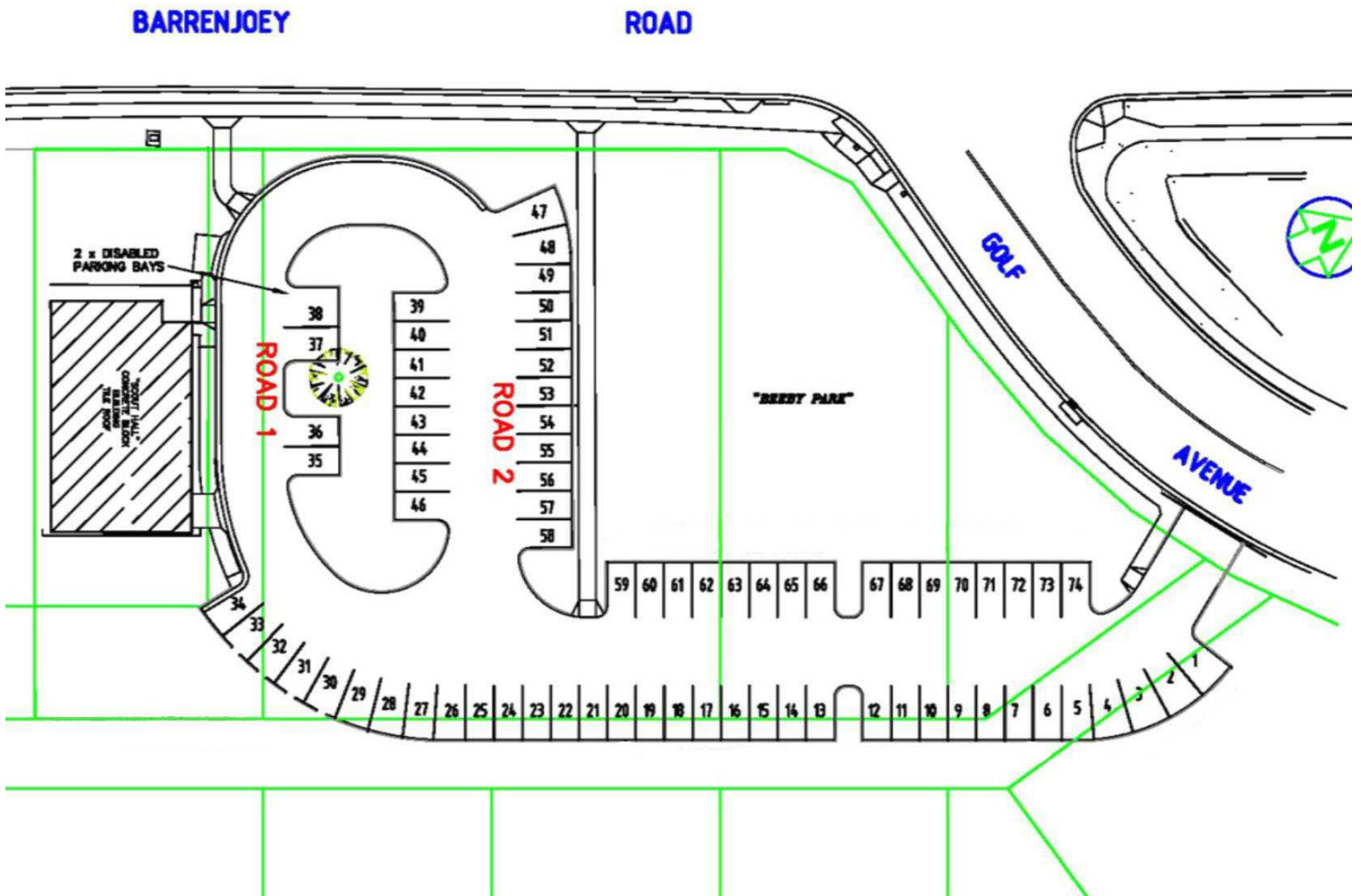
Further to this it is understood TfNSW is to pay Northern Beaches Council 2.4 million dollars for compensation for the loss of the 36 spots. The Council appears not to be against the loss of the 36 four hour spaces as they want the money and in this have little concern where the 36 people that use these spots will park.

TfNSW originally said there would be 150 additional parking spaces created by the B-Line project. The end result is there will be only 36 additional commuter spaces provided, but this simply taking over all the car spaces and is at the loss of all casual parking in Beeby Park.

Please note – TfNSW in proposing this in what I consider an illegal proposal in that already the 36 park and ride commuter spaces in Beeby Park are illegal in that they are used exclusively weekdays by Park and Ride commuters which is a use not consistent with the Crown Land Act of parking in a reserve car park must be ancillary and supportive to the parks uses of sports and

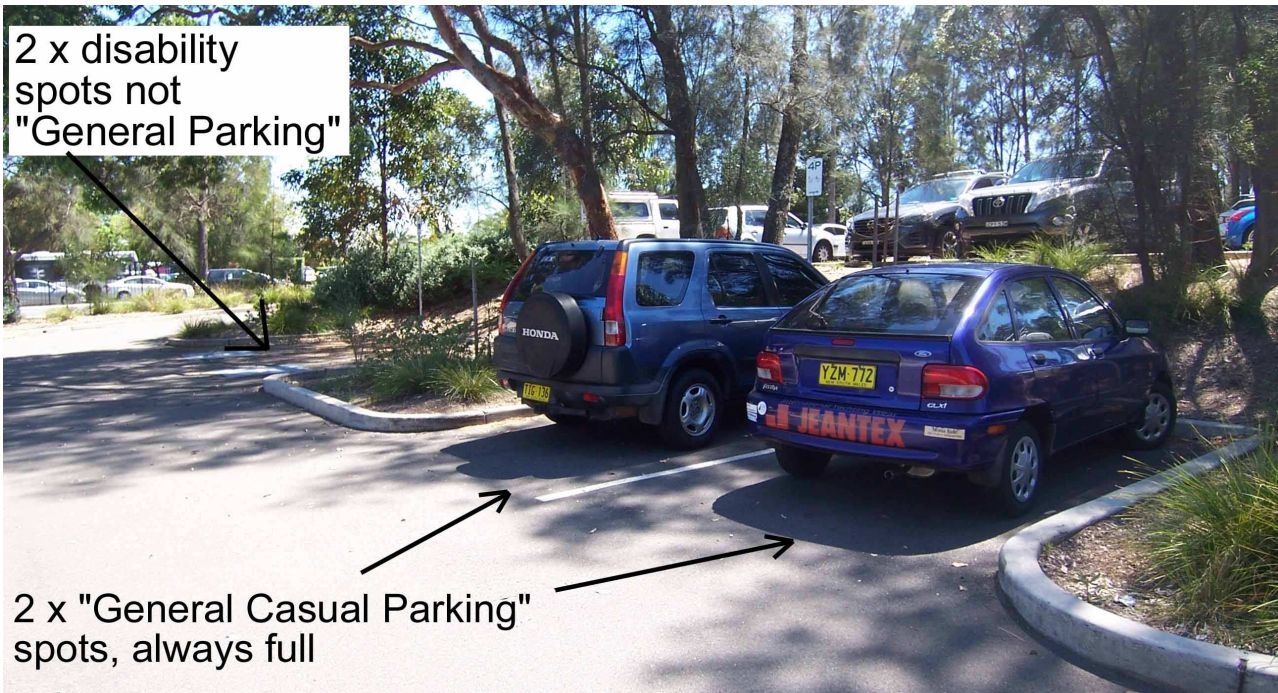
recreation. To now exacerbate this with the loss of the remaining 36 spaces is abhorrent and must not be allowed.

In 2014 half the 4 hour timed parking signs were removed from the steel posts – 2 ½ years later the posts still remain without the signs. Image below showing previously the 72 parking spots in Beeby Reserve that were 4 hr timed.



The photo above shows the 36 casual spaces that were lost to Park and Ride in 2014. These currently are always full weekdays for Commuter Parking

The following photos show the remaining 36 car spaces that are currently timed 4 hours for casual parking for the shopping precinct and use of the park for recreational purposes that TfNSW want to commandeer for another 36 spots for commuter parking.



These spots are adjacent the Scout and Guide Halls and are convenient casual parking. The 2 disability parking spots are used by people with a disability and are a necessity to remain as casual disabled spots.

13 Spots East Side of 4 hr Parking Isle

The next photo shows a bank of 13 car spaces all 4 hr timed. It also shows 2 x 4 hr parking signs that will be removed by TfNSW. These 13 spots are used extensively for casual parking. On this day 18 November 2016 only 2 spots were vacant.



12 Spots North Side of 4 hr Parking Isle

Photo taken 18 November 2016 at 10.53am – Of the 12 Spots **ONLY 1 IS VACANT**



Photo taken 22 November 2016 at 11.34am – Of the 12 Spots **NIL IS VACANT**



8 Spots South Side of 4 hr Parking Isle

Photo taken 18 November 2016 at 10.53am – Of the 8 Spots **ONLY 2 ARE VACANT**



Photo taken 22 November 2016 at 11.34am – Of the 8 Spots **NIL IS VACANT**



The above photos were taken Friday 18 November 2016 at 10.53am and Tuesday 22 November 2016 at 11.34am.

Clear evidence is that these 36 x 4 hour casual parking spots **MUST REMAIN**.

The 2 days the photos were taken were just normal usual weekdays.

TfNSW **MUST NOT** be allowed to commandeer these spots for B-Line parking in an attempt to show they have "Provided Extra B-Line Parking".

This is Crown Land and I call on the Crown to step in and do the right thing by the people in Mona Vale and scrap this ill thought through greedy grab of Crown Land for a mere 36 spots of B-Line parking. 36 spots is not even one third of a Bendy Bus, which holds 114 passengers.

CASUAL PARKING 15 SPOTS

There are 15 x 4 hour timed parking spots between the Tennis Courts and Guides and Scout Halls. These are mostly full on weekdays. These will remain but are not enough.

Immediately adjacent the tennis courts there are 15 car spaces.

These are mostly full taken up with people playing tennis, parent caregivers parked waiting for their children to finish playing / lessons, activities associated with the Guide and Scout Halls some but not all limited to Dance classes, Junior & Senior Guides and Scout activities after school and cleaning and maintenance of the facilities.

The attached Google Earth Image shows on a weekday the spots are all utilised.

These spaces are 4 hr timed but there aren't enough of them to serve the community and the subject 36 spots in Beeby Reserve MUST REMAIN

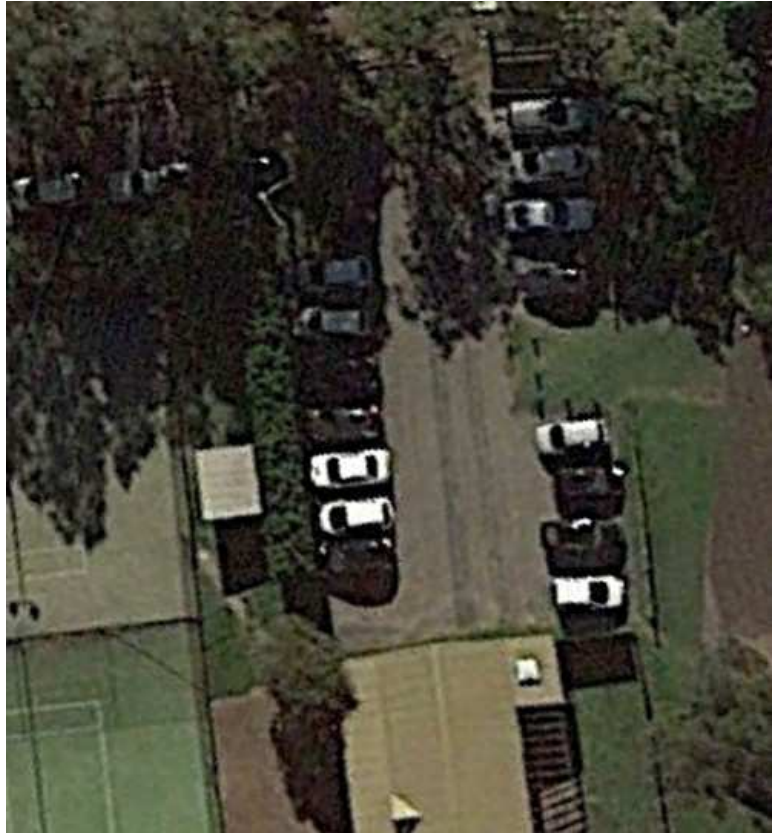


Photo below shows the 4 hr timed parking signs for the spots between the Guide Hall and Tennis Courts



KITCHENER PARK

Leaving the location of the tennis courts and travelling west along the access road there is a now 320 lineal metres of access road of Crown Land Reserve currently used by Park and Ride commuters.

First the access road section has 12 un-timed parking spots used by park and ride commuters. These spaces are always full each weekday.



Travelling now in a south direction it then opens up into two sides of commuter parking along the Crown Reserve.



West side un-timed all full of Park and Ride



East side un-timed all full of Park and Ride



Travelling further south shows both east and west sides full of Park and Ride.



Pittwater Council Kitchener Park Masterplan Photo, all spaces to the sports fields full of park and ride.

All car spots taken weekdays for Park and Ride



All spaces full of Park and Ride



Continuing travelling south shows West side all spaces full



Continuing travelling south shows West side all spaces full



Continuing travelling south shows West side all spaces full



Continuing travelling south shows next lot of available east side all spaces full



The most southern west side parking area has 1 of the 4 un-timed spaces available

So in summary of the 120 un-timed car spaces in Kitchener Park only 1 is free, right down the southern end of the access road near the Skate Park.

There is NO CASUAL parking in Kitchener Park for visitors to the shopping precinct.

The current 36 spots 4 hour timed in Beeby Park MUST REMAIN for casual parking.



Noted at the extreme south end of Kitchener Park east side of the road there are 5 x 4 hour spaces associated with the new skate ramp. These are useless for any other purpose other than the skate park as the excessive distance from the shopping precinct negates any casual parking.



So that's it, nothing between these spots and the 320 lineal metres to the 4 hr spots adjacent the tennis courts. The whole 320 metres of Crown Reserve parking is for 120 park and ride commuter cars and all but 1 spot is taken.

Noted is that parking within Mona Vale shopping precinct is extremely difficult with cars circling continuously within the centre looking for parking spots without success.

The new 250 spot Bungan Lane car park in Mona Vale shopping centre is nearly always full with people driving from bottom to top and back down again with no success to find an available spot.

It is considered Beeby Reserve and Kitchener Park have given more than enough for the illegal use of commuter parking for Park and Ride.

The current TfNSW proposal to steal the last remaining 36 casual parking spots in Beeby Reserve is abhorrent and **MUST BE** abandoned.

Regards

██████████

Attachment 1 next page



DOC14/115308

Mr Paul Davies
Principal Engineer
Strategy Investigation and Design
Pittwater Council
PO Box 882
MONA VALE NSW 1660

Dear Mr Davies

I refer to your letter of 10 July 2014 regarding proposed changes to parking controls at Beeby Park. Crown Lands appreciates the opportunity as landowner to comment on the proposal.

The Plan of Management for Kitchener Park, which includes Beeby Park, whilst not adopted by the Minister, has been applied to help in the strategic management of Kitchener Park. I note that when providing comments in relation to parking arrangements within the Reserve contained within the draft Plan, Crown Lands stated that parking was acceptable insofar as it was ancillary to the public recreation purposes of the Reserve and met the broader principles of Crown land management.

Crown Lands provides conditional approval for the proposed changes to increase 36 parking spots from the current 4 hour limit to a 12 hour limit. This approval is limited to a period of 12 months from the date of Council endorsement of the changes. Before the Department would consider the matter further, Council will need to provide data and commentary on utilisation rates for the 12 month period and provide further justification that any permanent changes to timed parking for these 36 parking spots would be conducive to the declared purpose of the reserve and continue to meet the broader principles of Crown land management.

I met with representatives of the "Save Beeby Park" organisation on 11 July 2014 following a number of representations from them expressing concerns in relation to the proposal. I note their concerns about the potential loss of parking for users of the reserve at the expense of non-users of the Park for 'park n ride' purposes.

I note that car parking facilities in the adjoining Kitchener Park are almost entirely 12 hour timed parking with very few spaces available for recreational users of that Park. Council may wish to consider increasing the number of 4 hour timed parking spots within Kitchener Park to offset the proposed losses within Beeby Park, thereby ensuring adequate parking is available for users of both Beeby Park and Kitchener Park.

Should you require any further information, I can be contacted on 4925 4112 or via email david.a.clarke@crowmland.nsw.gov.au.

Yours sincerely

David Clarke
A/Director East
Crown Lands

NSW Trade & Investment, Crown Lands
437 Hunter St, Newcastle, NSW 2309
PO Box 2185, Dangar, NSW 2309
Tel: 1300 052 637 Visit: www.crowmland.nsw.gov.au